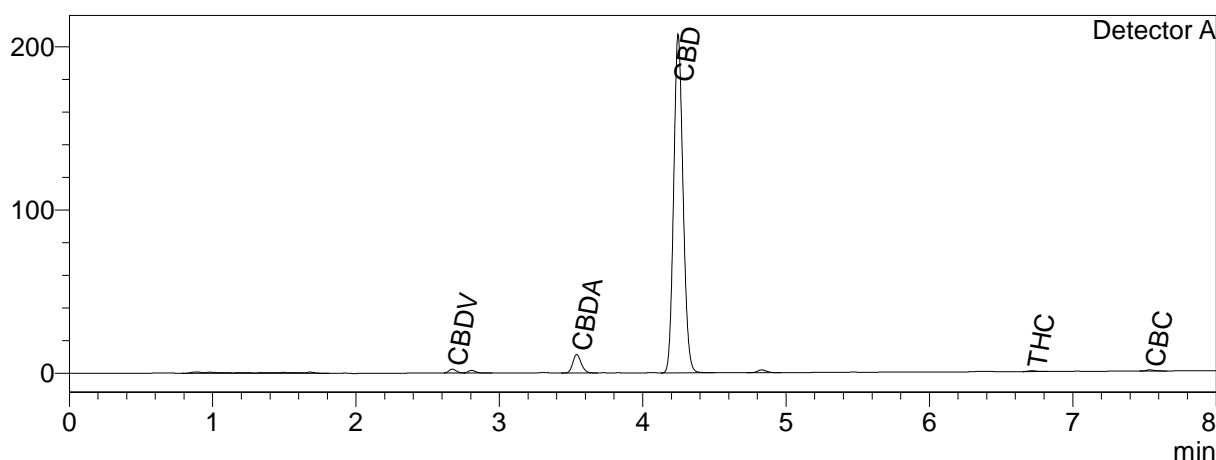


# CERTIFICATE OF ANALYSIS

## Chromatogram

mV



### Quantitative Results

Detector A

Compound Name	Concentration, %
CBDV	0.357
CBDA	1.762
CBGA	--
CBG	--
CBD	42.661
THCV	--
CBN	--
THC	0.059
CBC	0.106
THCA-A	--
CBL	--
CBDVA	--
CBDB	--

### Sample information

**Batch number:** Batch 465  
**Sample number:** M1802  
**Date of Analysis:** 2022 06 30

### Summary

<b>Total CBD</b>	<b>44.21</b>	<b>%</b>
<b>Total CBD</b>	<b>442.07</b>	<b>mg/g</b>

Instrumental and analytical conditions:

Sample preparation: 0.1 g of sample material was dissolved in 10 mL of HPLC grade methanol. The solution was vortexed and centrifuged. Then the solution was diluted to a final concentration. Quantification of cannabinoids was performed using standard calibration curve method. Equipment: Quantitative analysis was performed using Shimadzu Cannabis Analyzer for Potency an integrated HPLC system with built-in sample cooler, degasser, autoinjector and UV detector. NexLeaf CBX for Potency, 2.7  $\mu$ m, 4.6 x 150 mm column coupled with NexLeaf CBXGuard column was eluted by using a mixture of mobile phase A (0.085 % phosphoric acid in water) and mobile phase B (0.085 % phosphoric acid in Acetonitrile) with a flow rate of 1.6 mL/min at 35°C. Sample injection volume was set to 5  $\mu$ L. Gradient program used - 70 % B for 3 min, 70-85 % B over 4 min, 85-95 % B over 0.01 min; 95% B for 0.99 min; 95-70% B over 0.01 min; 70% B for 1.99min. Data was analyzed using Shimadzu LabSolutions software.